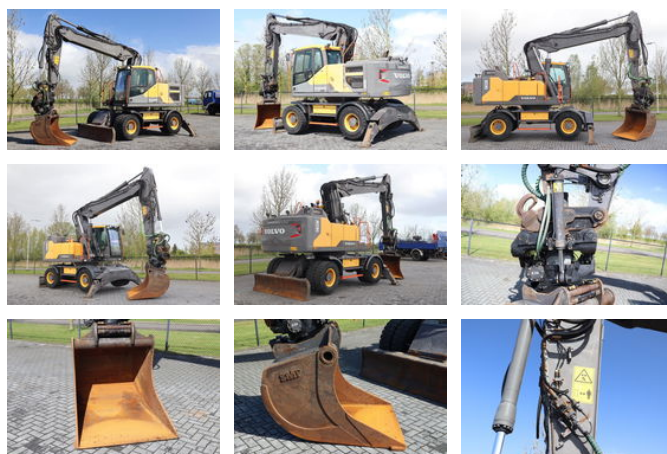


Volvo EW 220 E | TILTROTATOR | BUCKET | 2-PIECE | BSS

Algemene kenmerken

Merk	Volvo
Subcategorie	Wielgraafmachine
Bouwjaar	2018
Afgelezen urenstand	6526
Kleur	Geel
Conditie	Gebruikt
Algemene staat	Erg goed
Brandstof	Diesel
Emissieklasse	stage_4
Referentie	112370
CE markering	Ja



Eigenschappen

Ledig gewicht	25.600kg
Lengte	950cm
Breedte	254cm
Serienummer	320041
Cilinder inhoud	5.702cc

Volvo EW 220 E | TILTROTATOR | BUCKET | 2-PIECE | BSS

Technische specificaties

Aandrijving	wheels
-------------	--------

Vermogen	173hp
----------	-------

Omschrijving

For sale: Volvo EW220E Year: 2018 Hours: 6.526 Weight: 25.600 kg Engine and transmission: Volvo D6J 6-cylinder diesel 129 kW / 173 HP Displacement: 5.702 cc Emissions: Stage IV / Tier 4F Ad blue 3-speed transmission Undercarriage: 30 km/h Dozer blade Outriggers Trailer coupling Toolboxes Trelleborg 10.00-20 NHS tires 60% Equipment and options: Steelwrist S70 tiltrotator with oil quick and with aux hydraulics Hydraulic quick coupler SMP bucket 1200 liter LED working lights Rear and side view camera BSS (boom suspension system) All hydraulic lines (hammer / shear / rotation) Central lubrication Cabin: Climate control (airco) Digital board computer Radio Air suspended seat Seat heating Tyres:10.00-20 40% Documents: CE document Instruction manual Full-service history Transport dimensions: Length: 9.50 m Width: 2.75 m Height: 3.30 m Description: Well-equipped Volvo EW220E. The hydraulic pump has been repaired; the pump works normal. But there is still a possibility that it needs changing in the future. The machine comes with tilt rotator and bucket. The maintenance has been done by the Volvo dealer. Ready for work! Of course, we have more pictures and information available, and we are looking forward to helping you. Worldwide delivery is possible! For more information, please contact: Office: 0031-527246140 E-mail: info@hulleman.com Web: www.hulleman.com Hulleman Trucks B.V. D.P.A. Weeversstraat 2 8316 GG Marknesse - Holland

Accessoires