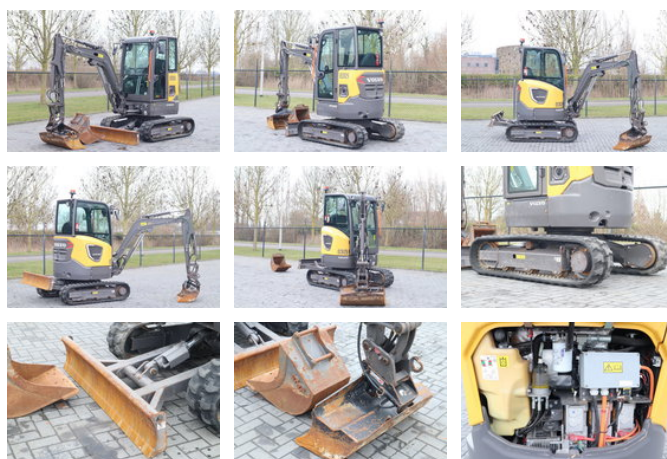


# Volvo ECR25 ELECTRIC | JECR25D | TILTBUCKET | BUCKET | LOW HOURS

## Algemene kenmerken

Merk	Volvo
Subcategorie	Minigraafmachine rups
Bouwjaar	2020
Afgelezen urenstand	797
Kleur	Geel
Conditie	Gebruikt
Algemene staat	Erg goed
Brandstof	Elektrisch
Emissieklasse	stage_5
Referentie	113779
CE markering	Ja



## Eigenschappen

Ledig gewicht	2.690kg
Serienummer	VCEC25DLL00010027

# Volvo ECR25 ELECTRIC | JECR25D | TILTBUCKET | BUCKET | LOW HOURS

## Technische specificaties

Aandrijving	tracking
-------------	----------

---

Vermogen	18kw
----------	------

## Omschrijving

For sale: Volvo JECR25D / ECR25D Electric Year: 2020 Hours: 797 Operating weight: 2.690 kg Electrical system: Battery type: Lithium-ion Voltage: 48V Battery capacity: 20 kWh Indicative runtime: up to 4 hours Motor type: permanent magnet Power: 18 kW Undercarriage: Rubber tracks 70% Sprocket: 60% Dozer blade Equipment: SMP quick coupler S30 Tilt bucket SMP bucket Swing away boom Extra hydraulic function LED Working lights Rotating beacon Closed cabin Cabin heater Radio Description: Good working Volvo excavator. Ready for work. Of course, we have more pictures and information available, and we are looking forward to helping you. Worldwide delivery is possible! For more information please contact: Office: 0031-527246140 E-mail: [info@hulleman.com](mailto:info@hulleman.com) Web: [www.hulleman.com](http://www.hulleman.com) Hulleman Trucks B.V. D.P.A. Weeversstraat 2 8316 GG Marknesse – Holland

## Accessoires