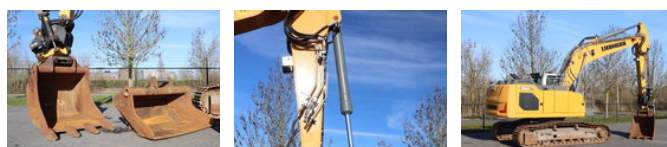


Liebherr R924 LC | ROTOTILT + GRIPPER | 2X BUCKET

Algemene kenmerken

Merk	Liebherr
Subcategorie	Rupsgraafmachine
Bouwjaar	2019
Afgelezen urenstand	4207
Kleur	Geel
Conditie	Gebruikt
Algemene staat	Goed
Brandstof	Diesel
Emissieklasse	stage_4
Referentie	113909.1
CE markering	Ja



Eigenschappen

Ledig gewicht	25.800kg
Serienummer	WLHZ1487EZC049572
Cilinder inhoud	4.500cc

Liebherr R924 LC | ROTOTILT + GRIPPER | 2X BUCKET

Technische specificaties

Vermogen

175hp

Omschrijving

For sale: Liebherr R924 LC Year: 2019 Hours: 4.207 Operating weight: 25.800 kg Engine: Liebherr D924 A7-05 Power: 129 kW / 175 HP 4-cylinder Displacement: 4.500 cc Emissions: Stage 4 / Tier 4F CE Undercarriage: Plate width: 60 cm Plates condition: 50% Rolls condition: 50% Sprocket condition: 40% Chain condition: 50% Equipment: Engcon S70 tilt rotator with gripper Quick coupler S70 Hammer / shear / rotation hydraulics Tooth bucket - year 2019 Grading bucket - year 2019 Central lubrication LED working lights around the machine Diesel self-filling installation LED rotating beacon on roof Cabin: Rear and side view camera Airconditioning / climate control Touch screen Radio Air suspension seat Heated seat Description: Good working Liebherr R926. Well-equipped and ready to work! Of course, we have more pictures and information available, and we are looking forward to helping you. Worldwide delivery is possible! For more information please contact: Office: 0031-527246140 e-mail: info@hulleman.com web: www.hulleman.com Hulleman Trucks B.V. D.P.A. Weeversstraat 2 8316 GG Marknesse - Holland

Accessoires

- Boordcomputer
- Centraal smeersysteem
- Zwaailicht