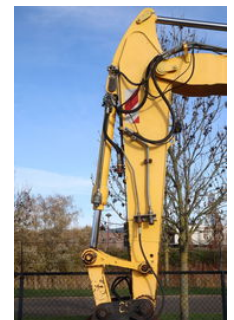


New Holland MH CITY | TILT BUCKET | QUICK COUPLER | DOZER BLADE

General features

Brand	New Holland
Subcategory	Wheeled excavator
Construction year	2005
Date of first registration	30-05-2005
Hourmeter reading	8719
Color	Yellow
Condition	Used
General condition	Good
Fuel	Diesel
Reference	113712
CE marking	Yes



Characteristics

Empty weight	15.500kg
Serial number	544075
Cylinder contents	3.900cc

New Holland MH CITY | TILT BUCKET | QUICK COUPLER | DOZER BLADE

Technical specifications

Drive	wheels
Engine output	115hp

Description

For sale: New Holland MH City Year: 2005 Hours: 8.719 Weight: ca 15.500 kg Dutch registration Engine and transmission: CNH Industrial TAA2V 4-cylinder diesel Displacement: 3.900 cc Power: 82 KW / 115 HP Undercarriage: Dozer blade Trailer coupling 2x toolbox Tyres: 315/80P22.5 75% Equipment and options: Check valves on the cylinders 2-piece boom Hydraulic quick coupler CW Tilt bucket All hydraulic lines (hammer / shear / rotation) Self-fueling system Working lights Cabin specifications: Radio Cabin heater Air suspended seat Of course, we have more pictures and information available, and we are looking forward to helping you. Worldwide delivery is possible! For more information, please contact: Office: 0031-527246140 E-mail: info@hulleman.com Web: www.hulleman.com Hulleman Trucks B.V. D.P.A. Weeversstraat 2 8316 GG Marknesse - Holland

Accessories