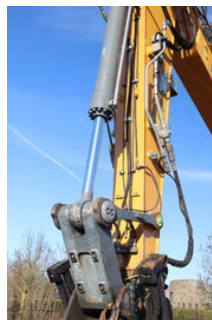


## Liebherr R924 LC | ROTOTILT + GRIPPER | 2X BUCKET

### General features

Brand	Liebherr
Subcategory	Crawler excavator
Construction year	2019
Hourmeter reading	4207
Color	Yellow
Condition	Used
General condition	Good
Fuel	Diesel
Emission class	stage_4
Reference	113909.1
CE marking	Yes



### Characteristics

Empty weight	25.800kg
Serial number	WLHZ1487EZC049572
Cylinder contents	4.500cc

# Liebherr R924 LC | ROTOTILT + GRIPPER | 2X BUCKET

## Technical specifications

Engine output 175hp

## Description

For sale: Liebherr R924 LC Year: 2019 Hours: 4.207 Operating weight: 25.800 kg Engine: Liebherr D924 A7-05 Power: 129 kW / 175 HP 4-cylinder Displacement: 4.500 cc Emissions: Stage 4 / Tier 4F CE Undercarriage: Plate width: 60 cm Plates condition: 50% Rolls condition: 50% Sprocket condition: 40% Chain condition: 50% Equipment: Engcon S70 tilt rotator with gripper Quick coupler S70 Hammer / shear / rotation hydraulics Tooth bucket - year 2019 Grading bucket - year 2019 Central lubrication LED working lights around the machine Diesel self-filling installation LED rotating beacon on roof Cabin: Rear and side view camera Airconditioning / climate control Touch screen Radio Air suspension seat Heated seat Description: Good working Liebherr R926. Well-equipped and ready to work! Of course, we have more pictures and information available, and we are looking forward to helping you. Worldwide delivery is possible! For more information please contact: Office: 0031-527246140 e-mail: info@hulleman.com web: www.hulleman.com Hulleman Trucks B.V. D.P.A. Weeversstraat 2 8316 GG Marknesse - Holland

## Accessories

- Onboard Computer
- Central lubrication system
- Rotating beacon