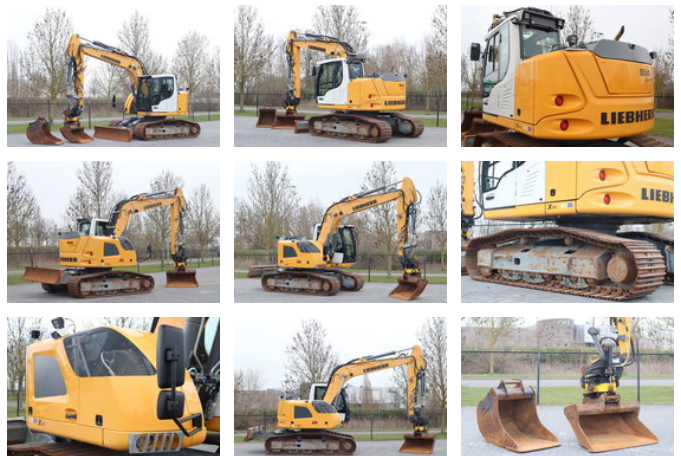


Liebherr R914 COMPACT STD | ROTOTILT | 2X BUCKET | DOZERBLADE

General features

Brand	Liebherr
Subcategory	Crawler excavator
Construction year	2020
Hourmeter reading	3548
Color	Yellow
Condition	Used
General condition	Very good
Fuel	Diesel
Emission class	stage_5
Reference	113910.1
CE marking	Yes



Characteristics

Empty weight	18.100kg
Serial number	WLHZ1511VZC049576
Cylinder contents	3.600cc

Liebherr R914 COMPACT STD | ROTOTILT | 2X BUCKET | DOZERBLADE

Technical specifications

Drive	tracking
Engine output	121hp

Description

For sale: Liebherr R914 Compact STD Year: 2020 Hours: 3.548 Operating weight: 18.100 kg Engine: Deutz TCD3.6 L4 Power: 90 kW / 121 PK Displacement: 3.600 cc 4-cylinders Emissions: Stage 5 / Tier 4F Undercarriage: Dozerblade Plates condition: 75% Rolls condition: 75% Sprocket condition: 80% Chain condition: 70% Equipment: Engcon S60 tilt rotator with aux hydraulics Grading bucket Digging bucket S60 quick coupler All hydraulic lines Central lubrication LED working lights Self-fueling system Cabin: Rear and sideview camera Airconditioning Air suspension seat Climate control Webasto parking heater Radio Description: Good working Liebherr R914 Compact . Well-equipped and ready to work! Of course, we have more pictures and information available, and we are looking forward to helping you. Worldwide delivery is possible! For more information, please contact Office: 0031-527246140 E-mail: info@hulleman.com Web: www.hulleman.com Hulleman Trucks B.V. D.P.A. Weeverstraat 2 8316 GG Marknesse - Holland

Accessories

- Bluetooth
- Onboard Computer
- Central lubrication system