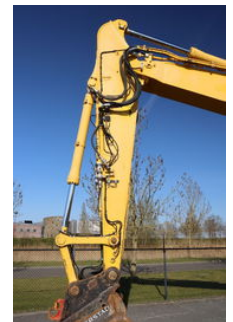


Komatsu PC228 USLC-10 | QUICK COUPLER | BUCKET | AIRCO

General features

Brand	Komatsu
Subcategory	Crawler excavator
Construction year	2016
Hourmeter reading	11431
Color	Yellow
Condition	Used
General condition	Good
Fuel	Diesel
Emission class	stage_3b
Reference	113113
CE marking	Yes



Characteristics

Empty weight	23.000kg
Length	900cm
Width	299cm
Serial number	KMTPC250KFC002055

Komatsu PC228 USLC-10 | QUICK COUPLER | BUCKET | AIRCO

Technical specifications

Drive	tracking
Engine output	165hp

Description

For sale: Komatsu PC228 USLC-10 Year: 2016 Hours: 11.431 Operating weight: 23.000 kg Engine: Komatsu SAA6D107E-2 Power: 123 kW / 165 HP Cylinders: 4 Emission: stage IIIB / Tier 4i Equipment: G70 Hydraulic quick coupler Digging bucket with teeth Hammer / sheer hydraulics Automatic lubrication GPS prepared LED working lights Proportional hydraulics Cabin: Air suspension seat Air conditioning Rear-view camera Proportional joysticks Radio Documents: CE document CE documents for attachments Instruction manual Service history Parts book Description: Well maintained Komatsu excavator. Complete with bucket and quick coupler. GPS prepared. Ready for work! Of course, we have more pictures and information available, and we are looking forward to helping you. Worldwide delivery is possible! For more information, please contact Office: 0031-527246140 E-mail: info@hulleman.com Web: www.hulleman.com Hulleman Trucks B.V. D.P.A. Weeversstraat 2 8316 GG Marknesse - Holland

Accessories